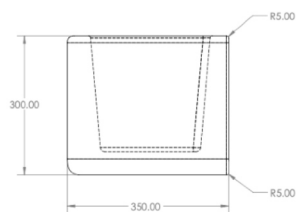


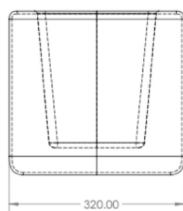


## PLANTER

# FORUM BASE PLANTER



SIDE VIEW



FRONT VIEW

**DIMENSIONS:** 12.59" x 13.78" x 11.81"

**APPROXIMATE WEIGHT:** 100.53lb

## COLORS



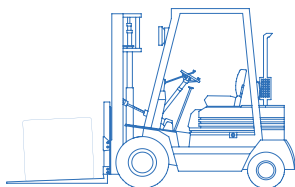
LIGHT GRAY

MEDIUM GRAY

DARK GRAY

The available colors are exclusive, with a visible finish.

## INSTALLATION



The use of forklifts is recommended for the proper installation of the Forum Base Planter.

## PRODUCT INFORMATION

The Forum Base Planter is a prefabricated architectural concrete element by Opticretos with dimensions of L: 12.59", W: 13.78", H: 11.81", and a weight of 100.53lb, that works attached to the base pieces containing some type of flora. some kind of flora. It is part of a system of modulation between the elements of the collection.

## MANUFACTURING

Our benches are manufactured using special molds. The concrete is processed using automated machinery, ensuring the highest quality in materials. All our products are manufactured in a plant under controlled conditions.

## COMPONENTS

We use materials such as cementitious marble aggregates, anti-fungal additives, alkali-resistant polypropylene fibers, integral waterproofing additives, and hydrophobic sealant.

## ADVANTAGES



Stain-resistant



Durability



Easy installation



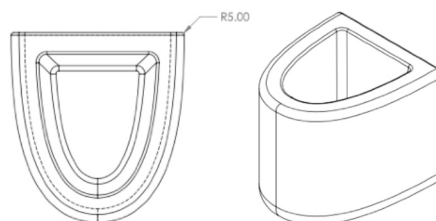
Environmentally sustainable



Its maintenance is minimal, and the color does not change or degrade over time since natural materials are used.

## CODES AND REGULATIONS

All our concrete products comply with current regulations. Some of these codes include: ACI 318, PCI (Precast Concrete Institute), IMCYC (Mexican Institute of Cement and Concrete), and the Building Regulations of the Federal District.



## FOLLOW US ON SOCIAL MEDIA



INSTAGRAM



FACEBOOK



WWW.

\*For technical clarifications, please contact the Engineering Department.

At Opticretos, we are concerned about our environment, so we continually develop products that help reduce energy consumption and natural resource usage.