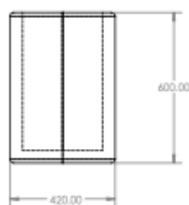
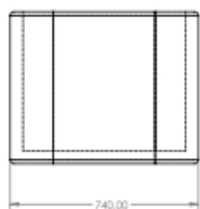




BENCH FORUM MEDIUS PLANTER



SIDE VIEW



FRONT VIEW

DIMENSIONS: 29.13" x 16.53" x 23.62"
APPROXIMATE WEIGHT: 407.85lb

COLORS



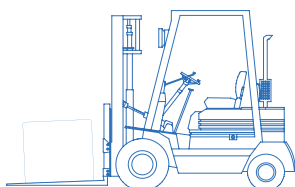
LIGHT GRAY

MEDIUM GRAY

DARK GRAY

The available colors are exclusive, with a visible finish.

INSTALLATION



The use of forklifts is recommended for the proper installation of the Forum Conector Medius Planter.



*For technical clarifications, please contact the Engineering Department.

PRODUCT INFORMATION

The Forum Conector Medius Planter is a prefabricated architectural concrete element by Opticretos with dimensions of L: 29.13", W: 16.53", H: 23.62", and a weight of 407.85lb, that functions as a union between benches and structure, containing flora in its interior. It is part of a system of modulation between the elements of the collection.

MANUFACTURING

Our benches are manufactured using special molds. The concrete is processed using automated machinery, ensuring the highest quality in materials. All our products are manufactured in a plant under controlled conditions.

COMPONENTS

We use materials such as cementitious marble aggregates, anti-fungal additives, alkali-resistant polypropylene fibers, integral waterproofing additives, and hydrophobic sealant.

ADVANTAGES



Stain-resistant



Durability



Easy installation



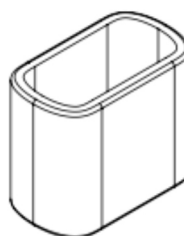
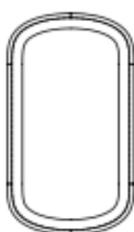
Environmentally sustainable



Its maintenance is minimal, and the color does not change or degrade over time since natural materials are used.

CODES AND REGULATIONS

All our concrete products comply with current regulations. Some of these codes include: ACI 318, PCI (Precast Concrete Institute), IMCYC (Mexican Institute of Cement and Concrete), and the Building Regulations of the Federal District.



FOLLOW US ON SOCIAL MEDIA



INSTAGRAM



FACEBOOK



WWW.

At Opticretos, we are concerned about our environment, so we continually develop products that help reduce energy consumption and natural resource usage.