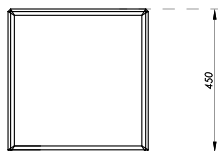
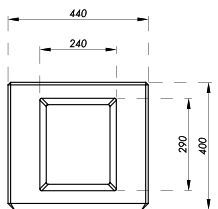




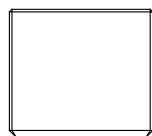
PLANTER KAMPILA I



TOP VIEW



FRONT VIEW



SIDE VIEW



DIMENSIONS: 17.72"x17.32"x15.75"
APPROXIMATE WEIGHT: 125KG

COLORS



The available colors are exclusive, with a visible finish.

INSTALLATION



The use of a skid is recommended for the correct installation of the Kampila-I bench.



*For technical clarifications, please contact the Engineering Department.



Phone
(81) 1769 1198
(81) 17611199

Workspace Founders Building
Suite 609, Del Paseo Residencial
Monterrey, Nuevo León, ZIP Code
64909

PRODUCT INFORMATION

The Kampia-I bench is a prefabricated architectural concrete element by Opticretos with dimensions of L: 17.72", W: 17.32", H: 15.75", and a weight of 125kg. Designed for outdoor use, it is resistant to vandalism and heavy-duty usage. Benches are a good choice for public and private spaces such as schools, universities, parks, corporate areas, residential areas, industrial plants, hospitals, etc.

MANUFACTURING

Our benches are manufactured using special molds. The concrete is processed using automated machinery, ensuring the highest quality in materials. All our products are manufactured in a plant under controlled conditions.

COMPONENTS

We use materials such as cementitious marble aggregates, anti-fungal additives, alkali-resistant polypropylene fibers, integral waterproofing additives, and hydrophobic sealant.

ADVANTAGES



Stain-resistant



Durability



Easy installation



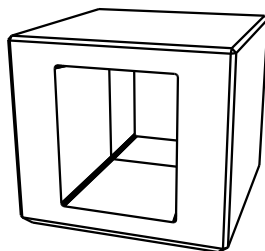
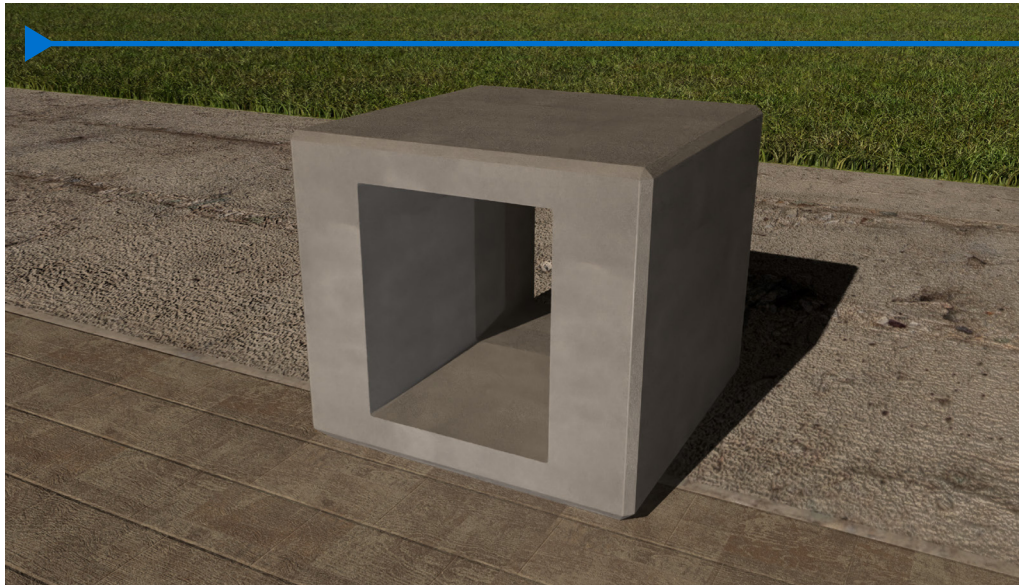
Environmentally sustainable



Its maintenance is minimal, and the color does not change or degrade over time since natural materials are used.

CODES AND REGULATIONS

All our concrete products comply with current regulations. Some of these codes include: ACI 318, PCI (Precast Concrete Institute), IMCYC (Mexican Institute of Cement and Concrete), and the Building Regulations of the Federal District.



FOLLOW US ON SOCIAL MEDIA



INSTAGRAM



FACEBOOK



WWW.

At Opticretos, we are concerned about our environment, so we continually develop products that help reduce energy consumption and natural resource usage.