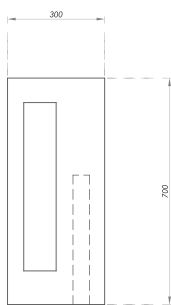




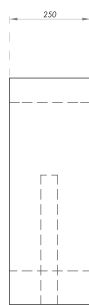
BOLLARD KITRINO



TOP VIEW



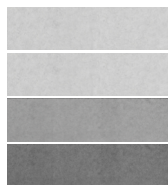
FRONT VIEW



SIDE VIEW

DIMENSIONS: 11.81" x 9.84" x 27.56"
APPROXIMATE WEIGHT: 202.83lb

COLORS



IVORY WHITE

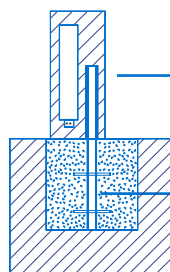
LIGHT GRAY

MEDIUM GRAY

DARK GRAY

The available colors are exclusive, with a visible finish.

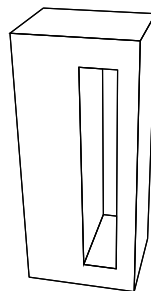
INSTALLATION



BBOLLARD WITH PTR
2-1/2" x 2-1/2"
(BY OPTICRETOS)

BASE WITH PTR 2" x 2"
IMBEDDED IN CONCRETE
(BY OTHERS)

**LUMINARIA POR OTROS



PRODUCT INFORMATION

The Kokkino bollard is a prefabricated architectural concrete element by Opticretos with dimensions of L: 11.81", W: 9.84", H: 27.56", and a weight of 202.83lb. Designed for outdoor use, it is resistant to vandalism and heavy-duty usage. Bollards are a good choice for public and private spaces such as schools, universities, parks, corporate areas, residential areas, industrial plants, hospitals, etc.

MANUFACTURING

Our bollards are manufactured using special molds. The concrete is processed using automated machinery, ensuring the highest quality in materials. All our products are manufactured in a plant under controlled conditions.

COMPONENTS

We use materials such as cementitious marble aggregates, anti-fungal additives, alkali-resistant polypropylene fibers, integral waterproofing additives, and hydrophobic sealant.

ADVANTAGES



Stain-resistant



Durability



Easy installation



Environmentally sustainable



Its maintenance is minimal, and the color does not change or degrade over time since natural materials are used.

CODES AND REGULATIONS

All our concrete products comply with current regulations. Some of these codes include: ACI 318, PCI (Precast Concrete Institute), IMCYC (Mexican Institute of Cement and Concrete), and the Building Regulations of the Federal District.



FOLLOW US ON SOCIAL MEDIA



INSTAGRAM



FACEBOOK



WWW.