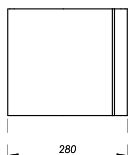
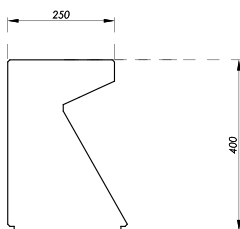




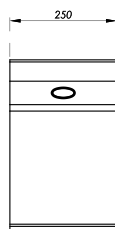
## LUMINAIRE LODUS



TOP VIEW



FRONT VIEW

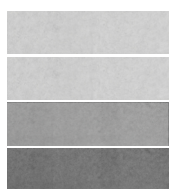


SIDE VIEW



**DIMENSIONS:** 11.02"x9.84"x15.75"  
**APPROXIMATE WEIGHT:** 105.82lb

### COLORS



IVORY WHITE

LIGHT GRAY

MEDIUM GRAY

DARK GRAY

The available colors are exclusive, with a visible finish.

### INSTALLATION



It is recommended to use a skate for the correct installation of the Lodus bollard.  
Lighting is not included.



\*For technical clarifications, please contact the Engineering Department.

### PRODUCT INFORMATION

The Lodus luminaire is a prefabricated architectural concrete element by Opticretos with dimensions of L: 11.02", W: 9.84", H: 15.75", and a weight of 105.82lb. Designed for outdoor use, it is resistant to vandalism and heavy-duty usage. Luminaires are a good choice for public and private spaces such as schools, universities, parks, corporate areas, residential areas, industrial plants, hospitals, etc.

### MANUFACTURING

Our luminaires are manufactured using special molds. The concrete is processed using automated machinery, ensuring the highest quality in materials. All our products are manufactured in a plant under controlled conditions.

### COMPONENTS

We use materials such as cementitious marble aggregates, anti-fungal additives, alkali-resistant polypropylene fibers, integral waterproofing additives, and hydrophobic sealant.

### ADVANTAGES



Stain-resistant



Durability



Easy installation



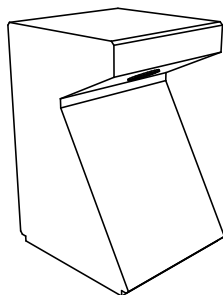
Environmentally sustainable



Its maintenance is minimal, and the color does not change or degrade over time since natural materials are used.

### CODES AND REGULATIONS

All our concrete products comply with current regulations. Some of these codes include: ACI 318, PCI (Precast Concrete Institute), IMCYC (Mexican Institute of Cement and Concrete), and the Building Regulations of the Federal District.



### FOLLOW US ON SOCIAL MEDIA



INSTAGRAM



FACEBOOK



WWW.

At Opticretos, we are concerned about our environment, so we continually develop products that help reduce energy consumption and natural resource usage.