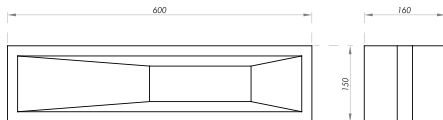


TRELLIS
VENTUS



TOP VIEW

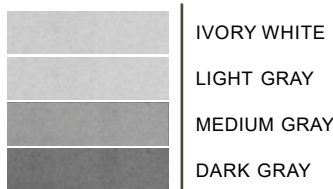


FRONT VIEW

SIDE VIEW

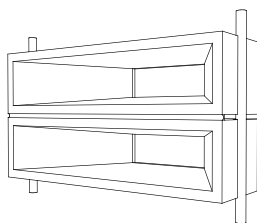
DIMENSIONS: 23.62 "x 6.30 "x5.91"
APPROXIMATE WEIGHT: 13.23lb

COLORS



The available colors are exclusive, with a visible finish.

INSTALLATION



The use of forklifts is recommended for the proper unloading of the Ventus trellis pallets.



*For technical clarifications, please contact the Engineering Department.

PRODUCT INFORMATION

The Ventus trellis is a prefabricated element made of architectural concrete by Opticretos with dimensions L: 23.62", W: 6.30", H: 5.91", and a weight of 13.23lb. Designed for outdoor use, it is durable and robust. Trellises are a good option for both public and private spaces such as schools, universities, parks, corporate areas, residential spaces, industrial plants, hospitals, etc.

MANUFACTURING

Our trellises are manufactured using special molds. The concrete is processed using automated machinery, ensuring the highest quality in materials. All our products are manufactured in-house under controlled conditions.

COMPONENTS

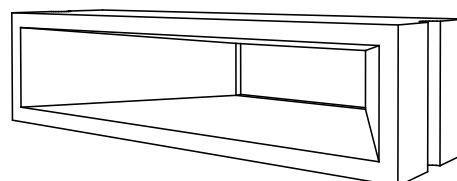
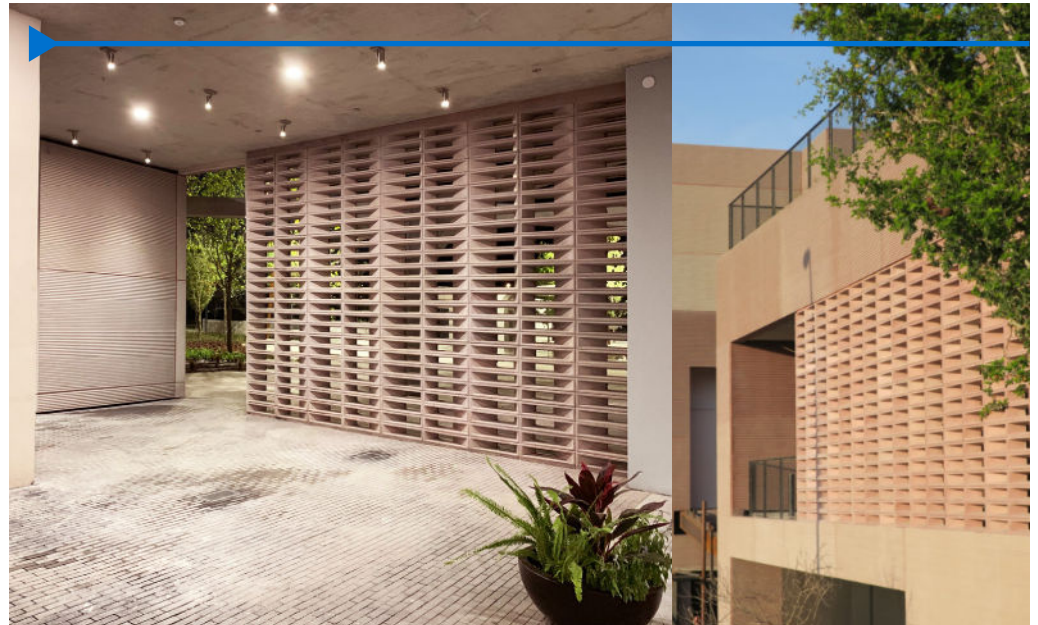
We use materials such as cementitious marble chips, anti-fungal additives, alkali-resistant polypropylene fibers, integral waterproofing additives, and hydrophobic sealant.

ADVANTAGES

- Stain-resistant
- Durability
- Easy installation
- Environmentally sustainable
- Its maintenance is minimal, and the color does not change or degrade over time since natural materials are used.

CODES AND REGULATIONS

All our concrete products comply with current regulations. Some of these codes include: ACI 318, PCI (Precast Concrete Institute), IMCYC (Mexican Institute of Cement and Concrete), and the Building Regulations of the Federal District.



FOLLOW US ON SOCIAL MEDIA



INSTAGRAM



FACEBOOK



WWW.

At Opticretos, we are concerned about our environment, so we continually develop products that help reduce energy consumption and natural resource usage.