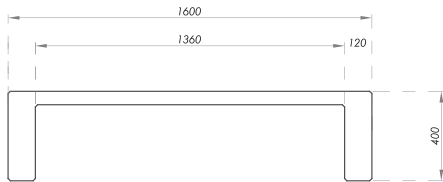


BENCH KAMPIA-A



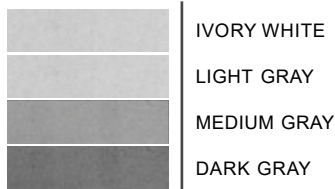
TOP VIEW



FRONT VIEW

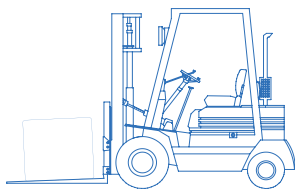
DIMENSIONS: 62.99" x 17.72" x 15.75"
APPROXIMATE WEIGHT: 418.88lb

COLORS



The available colors are exclusive, with a visible finish.

INSTALLATION



The use of forklifts is recommended for the proper installation of the Kampia-A bench



*For technical clarifications, please contact the Engineering Department.

PRODUCT INFORMATION

The Kampia-A bench is a prefabricated architectural concrete element by Opticretos with dimensions of L: 62.99", W: 17.72", H: 15.75", and a weight of 418.88lb. Designed for outdoor use, it is resistant to vandalism and heavy-duty usage. Benches are a good choice for public and private spaces such as schools, universities, parks, corporate areas, residential areas, industrial plants, hospitals, etc.

MANUFACTURING

Our benches are manufactured using special molds. The concrete is processed using automated machinery, ensuring the highest quality in materials. All our products are manufactured in a plant under controlled conditions.

COMPONENTS

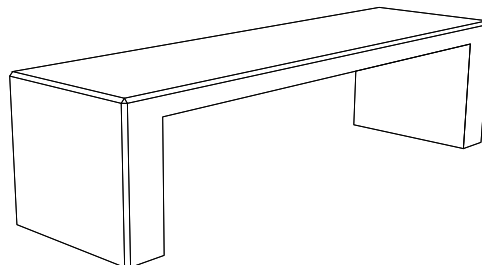
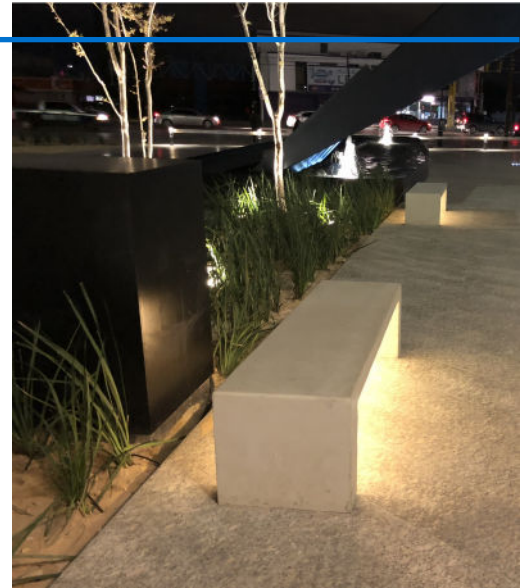
We use materials such as cementitious marble aggregates, anti-fungal additives, alkali-resistant polypropylene fibers, integral waterproofing additives, and hydrophobic sealant.

ADVANTAGES

- Stain-resistant
- Easy installation
- Durability
- Environmentally sustainable
- Its maintenance is minimal, and the color does not change or degrade over time since natural materials are used.

CODES AND REGULATIONS

All our concrete products comply with current regulations. Some of these codes include: ACI 318, PCI (Precast Concrete Institute), IMCYC (Mexican Institute of Cement and Concrete), and the Building Regulations of the Federal District.



FOLLOW US ON SOCIAL MEDIA



INSTAGRAM



FACEBOOK



WWW.

At Opticretos, we are concerned about our environment, so we continually develop products that help reduce energy consumption and natural resource usage.